

Apalachicola Bay Oyster Restoration Phase II Update



Devin Resko

Fishery Disaster Relief Program Coordinator
Division of Marine Fisheries Management



Florida Fish and Wildlife Conservation Commission

Program Overview

- \$20M agreement with National Fish and Wildlife Foundation (NFWF)
- Restoration activities in Apalachicola Bay
- Revised oyster management strategies for Apalachicola Bay & Suwannee Sound
- NFWF has expressed concerns over moving forward with large scale restoration
 - Large number of unknowns still present
- FWC will perform a restoration pilot study
- Utilizing pilot study, FWC will have more data to construct and perform larger restoration activity



Apalachicola Bay Oyster Restoration – Pilot Study

- NFWF expressed desire for FWC to test multiple treatments
 1. Reef height
 2. Material size
- FSU ABSI's willingness to have a complimentary study
 - Increases scientific scope of work done in Apalachicola Bay
 - Provides more data to assist in future, larger restoration activities



Apalachicola Bay Oyster Restoration – Pilot Study

- FWC submitted pilot study “one pager” scope of work to NFWF in early December '22
- Met with NFWF in late December, requested additional information, revised submission deadline:
 - Mid-January: Preliminary construction plan, monitoring/sampling methods, budget for NFWF review **COMPLETED**
 - Mid-February: FWC addressed comments from NFWF, final documents for NFWF committee review and approval



Pilot Study Details – Overview

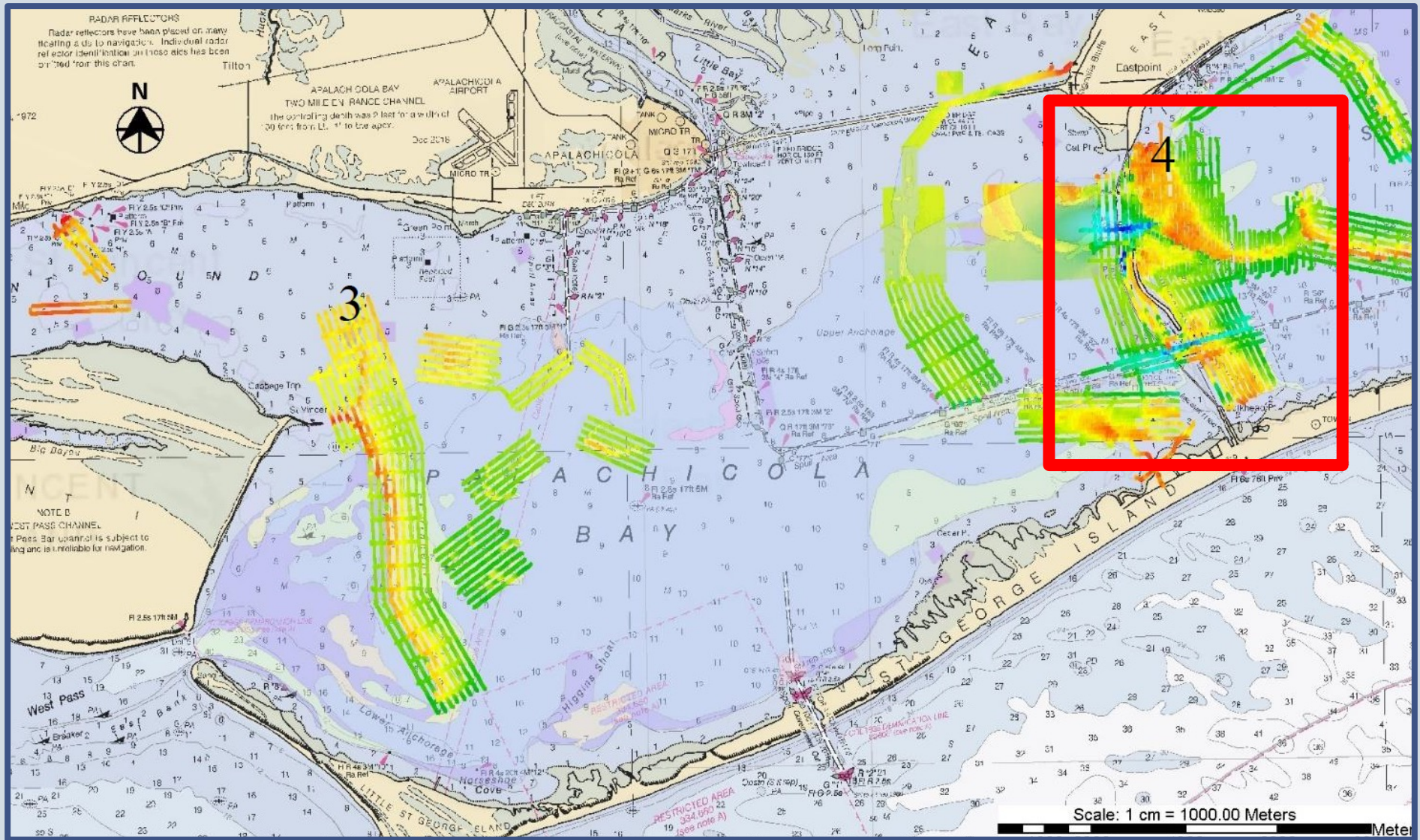
- Reef height treatments: 1 ft (low) and 2 ft (high)
- Material size: 6” (small) & 12” (large) FL limestone
- Location: East side of Apalachicola Bay
- Reef size: 1.0 acre
- Replicates: 5-7
- Monitoring criteria: 1) density of live oysters/m², 2) size classes, and 3) cultch weight and/or volume
- Monitoring effort: *Before, After, Control* design for shell budget, diver-excavated sampling, environmental monitoring equipment
- **Cost: \$6.97 M** for scientifically-sound study that produces ~24 acres of treated oyster habitat

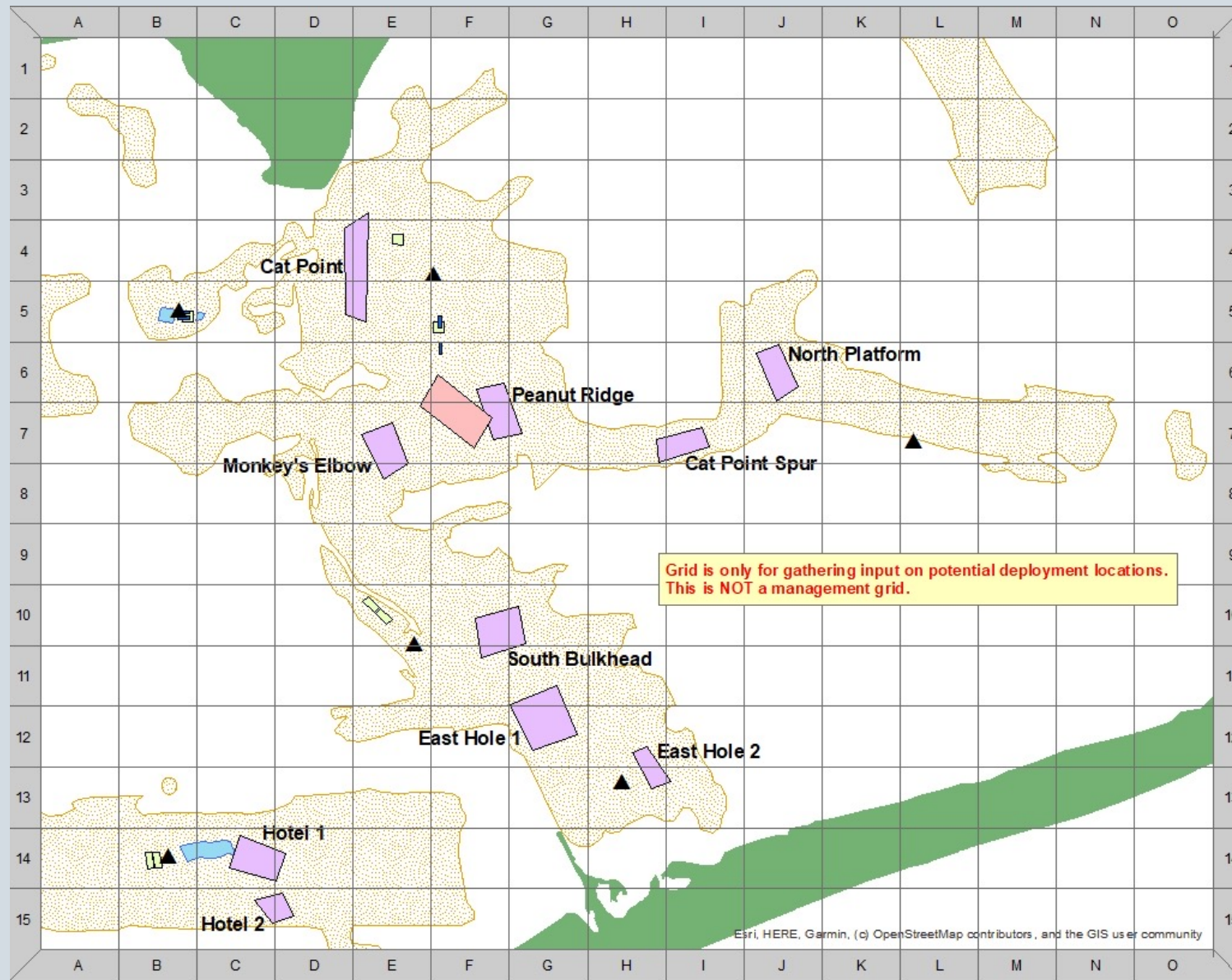


Pilot Study Details – Reef Locations

- Bay is a complex body of water
- Location: East side of Apalachicola Bay, near current oyster populations
- Replicates: 5-7
- Approximately 24 acres for restoration
- Important to control for ecological conditions
- Main steps in choosing sites for pilot study:
 1. Map all recent restoration work, mapping data from University of New Hampshire
 2. FWRI will select potential locations to ground truth
 3. Listen to recommendations from local stakeholders on historically productive areas







Next Steps

- Continue internal, external refinement of pilot study
- FWC will submit final documents to NFWF for approval later this month
- Continue drafting of competitive solicitation for contractor
- Goal is to have contractor, material in water Summer 2023



FWC Outreach and Engagement

- Franklin County BOCC
 - Program update – Dec. 6th
 - Continued engagement
- Rep. Jason Shoaf
- Future engagement
 - FCBOCC
 - SWWA



Questions?

